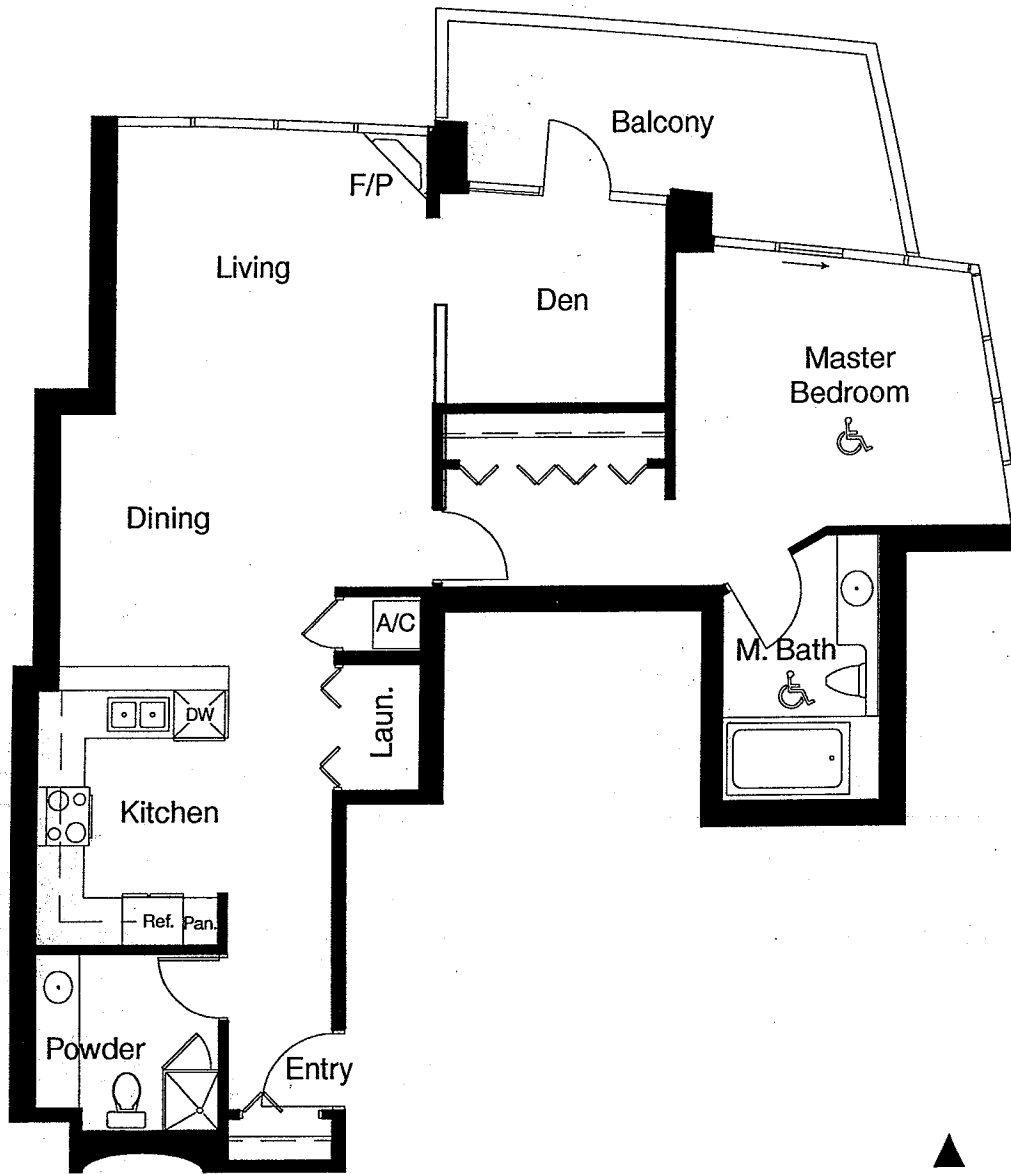


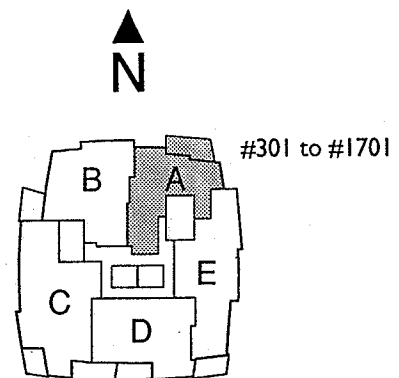
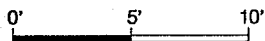


HORIZONS

MARINA DISTRICT



Plan A
 1 Bedroom & Den
 1,036 sq.ft. (approximate)

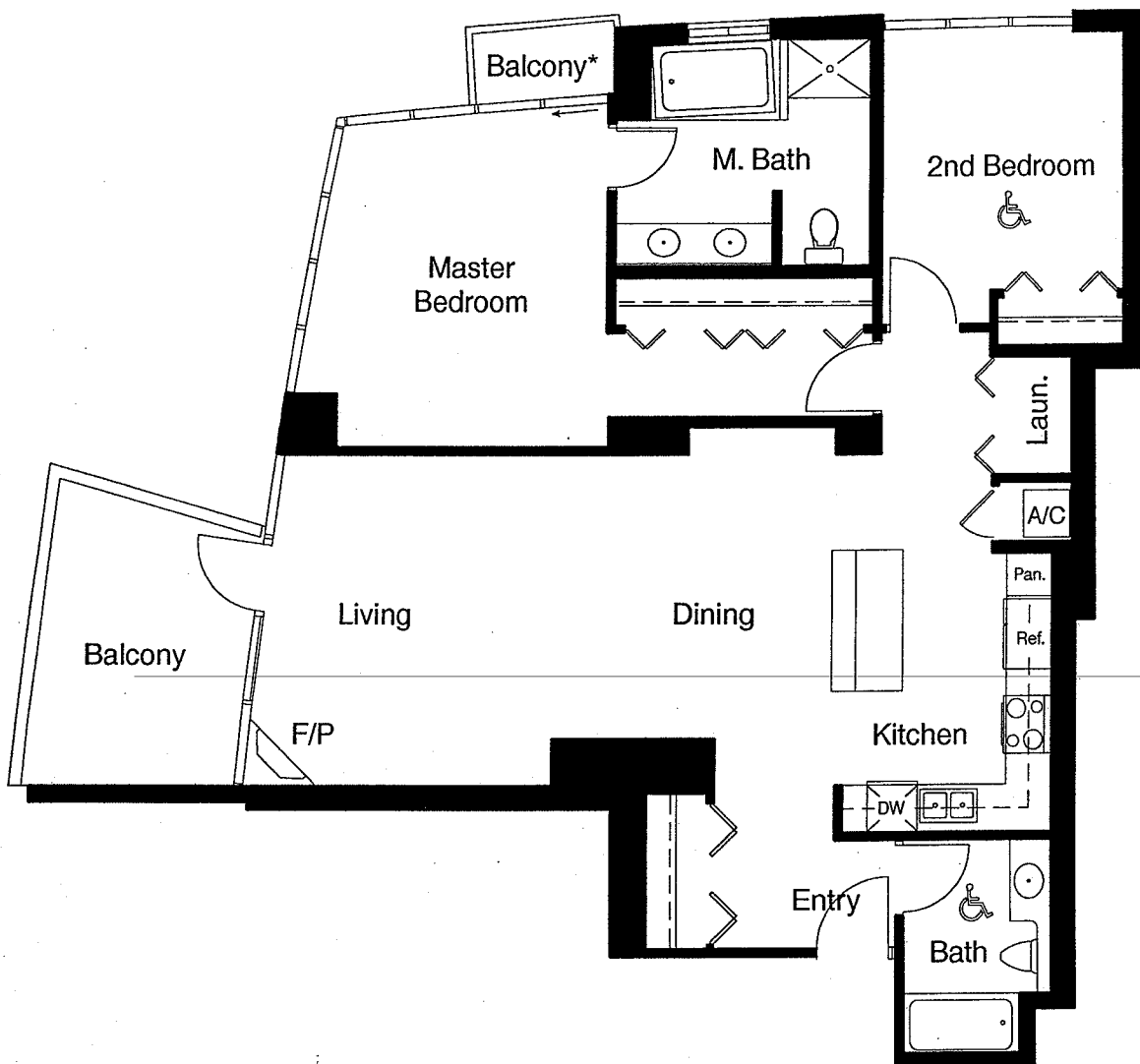


The builder reserves the right to change floor plans, elevations, specifications and prices without notice. Square footages as noted are approximations of each individual unit. The Purchaser is responsible for verification of the unit layout & square footage. All renderings, floor plans and maps are artist's conceptions and are not intended to be an actual depiction of buildings, driveways or landscaping. Floor plans vary. Ask a Horizons sales person for details.

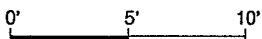


HORIZONS

MARINA DISTRICT

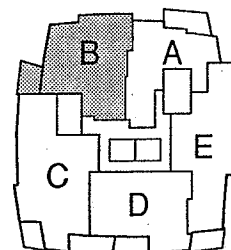


Plan B
 2 Bedroom
 1,222 sq.ft. (approximate)

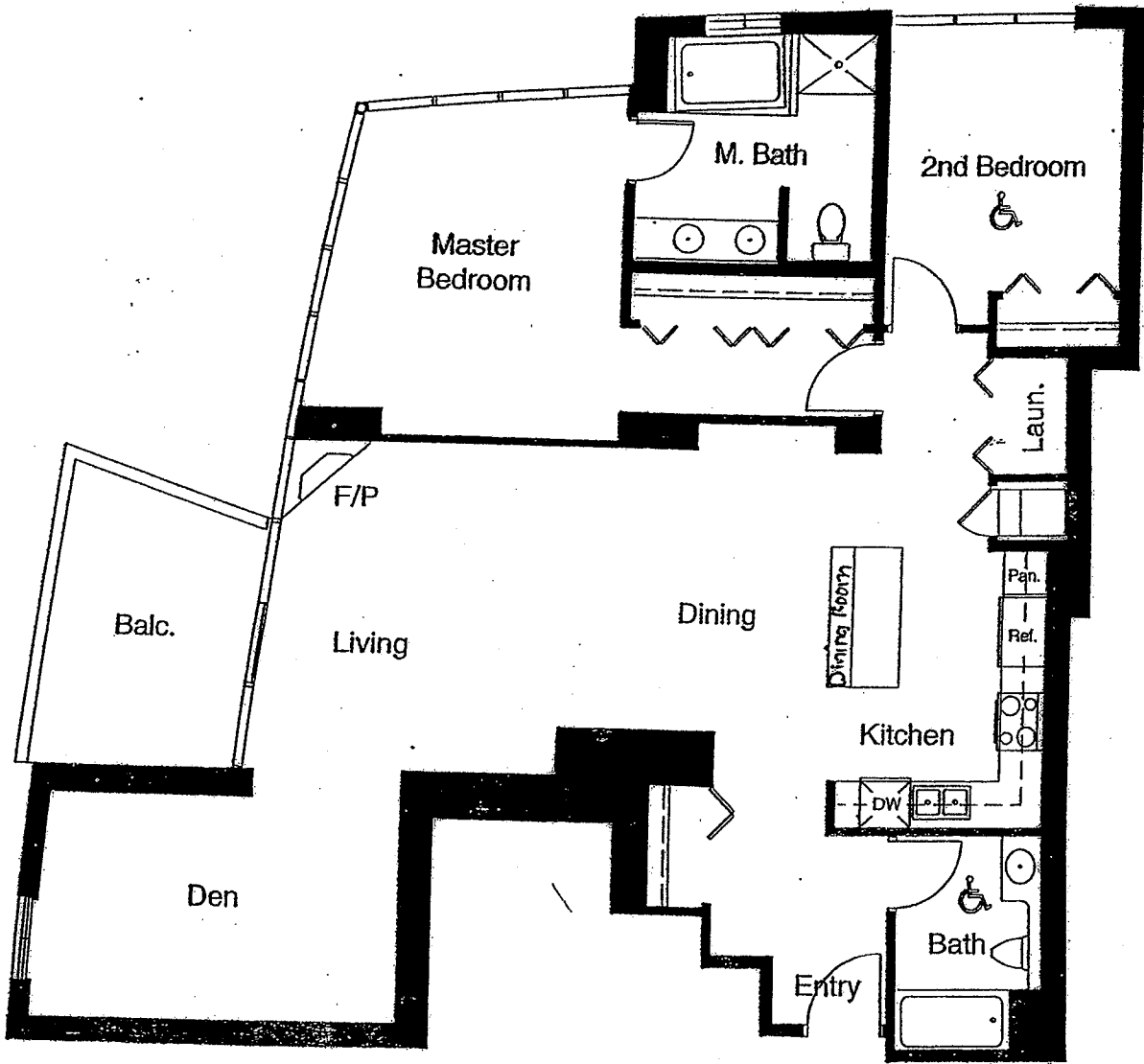


#305 to #1705

*Balcony off
 Master Bedroom on
 Levels 3 to 15 only.

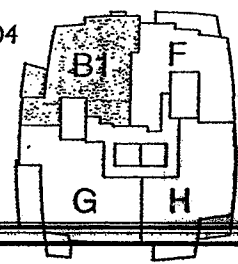


The builder reserves the right to change floor plans, elevations, specifications and prices without notice. Square footages as noted are approximations of each individual unit. The Purchaser is responsible for verification of the unit layout & square footage. All renderings, floor plans and maps are artist's conceptions and are not intended to be an actual depiction of buildings, driveways or landscaping. Floor plans vary. Ask a Horizons sales person for details.



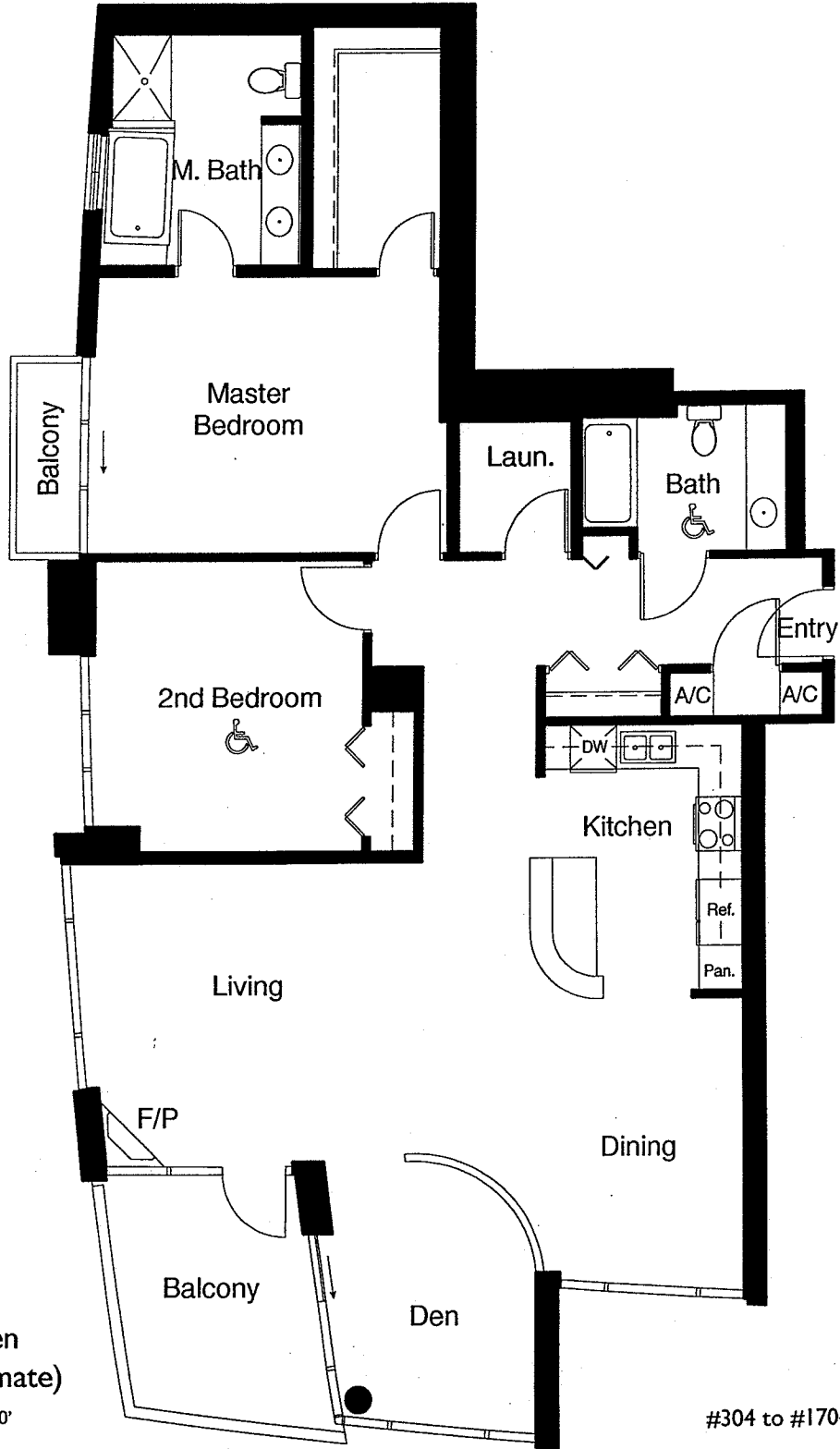
Plan B1
 2 Bedroom & Den
 1,393 sq.ft. (approximate)

#1804 to #1904



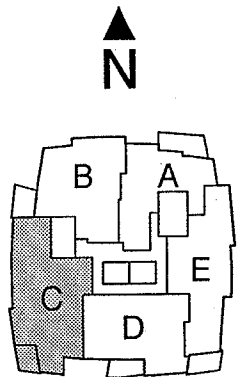
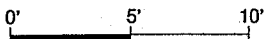
HORIZONS

MARINA DISTRICT



Plan C

2 Bedroom & Den
1,544 sq.ft. (approximate)

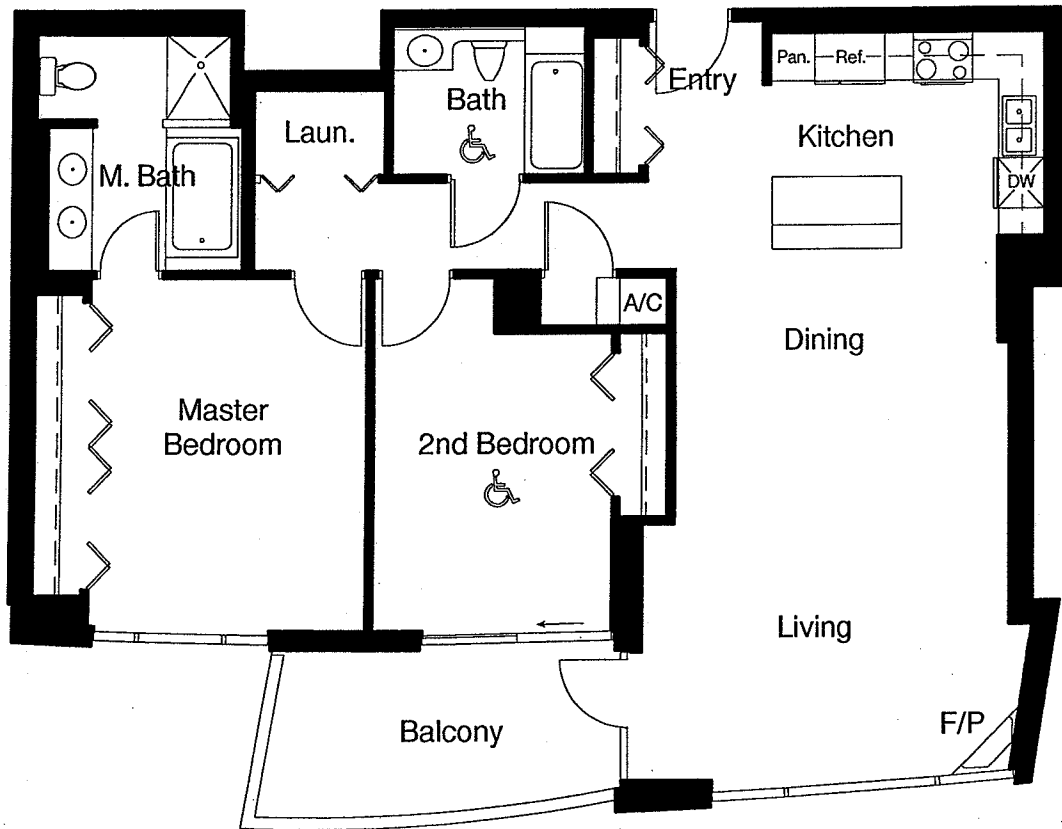


#304 to #1704

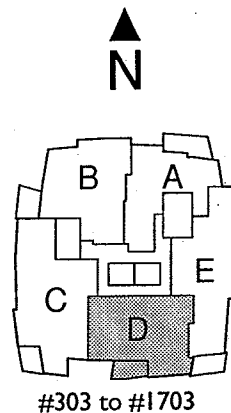
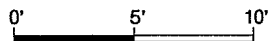
The builder reserves the right to change floor plans, elevations, specifications and prices without notice. Square footages as noted are approximations of each individual unit. The Purchaser is responsible for verification of the unit layout & square footage. All renderings, floor plans and maps are artist's conceptions and are not intended to be an actual depiction of buildings, driveways or landscaping. Floor plans vary. Ask a Horizons sales person for details.

HORIZONS

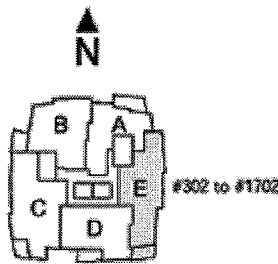
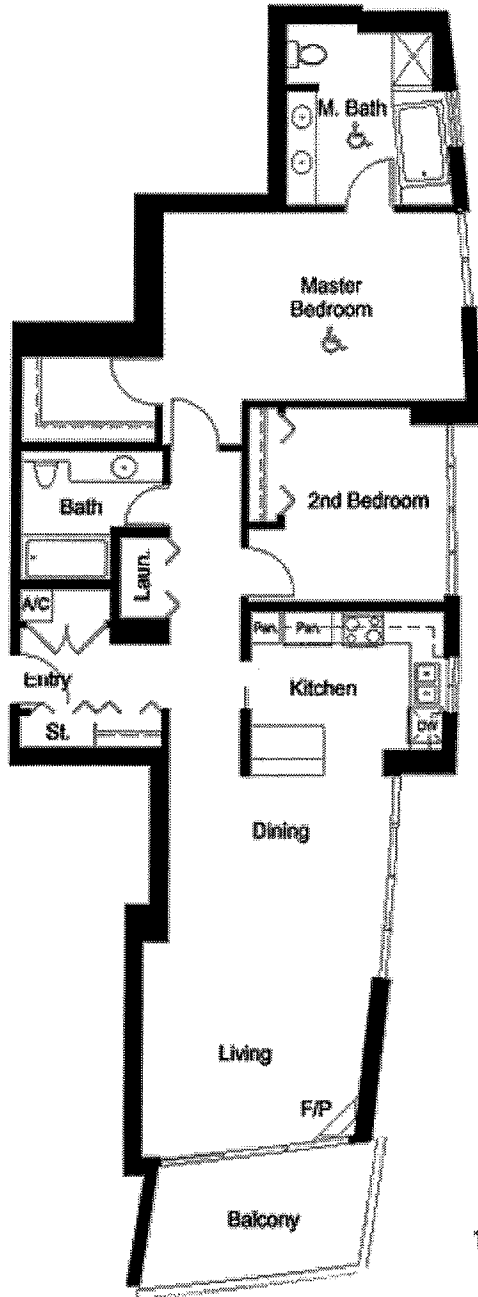
MARINA DISTRICT



Plan D
 2 Bedroom
 1,215 sq.ft. (approximate)



The builder reserves the right to change floor plans, elevations, specifications and prices without notice. Square footages as noted are approximations of each individual unit. The Purchaser is responsible for verification of the unit layout & square footage. All renderings, floor plans and maps are artist's conceptions and are not intended to be an actual depiction of buildings, driveways or landscaping. Floor plans vary. Ask a Horizons sales person for details.

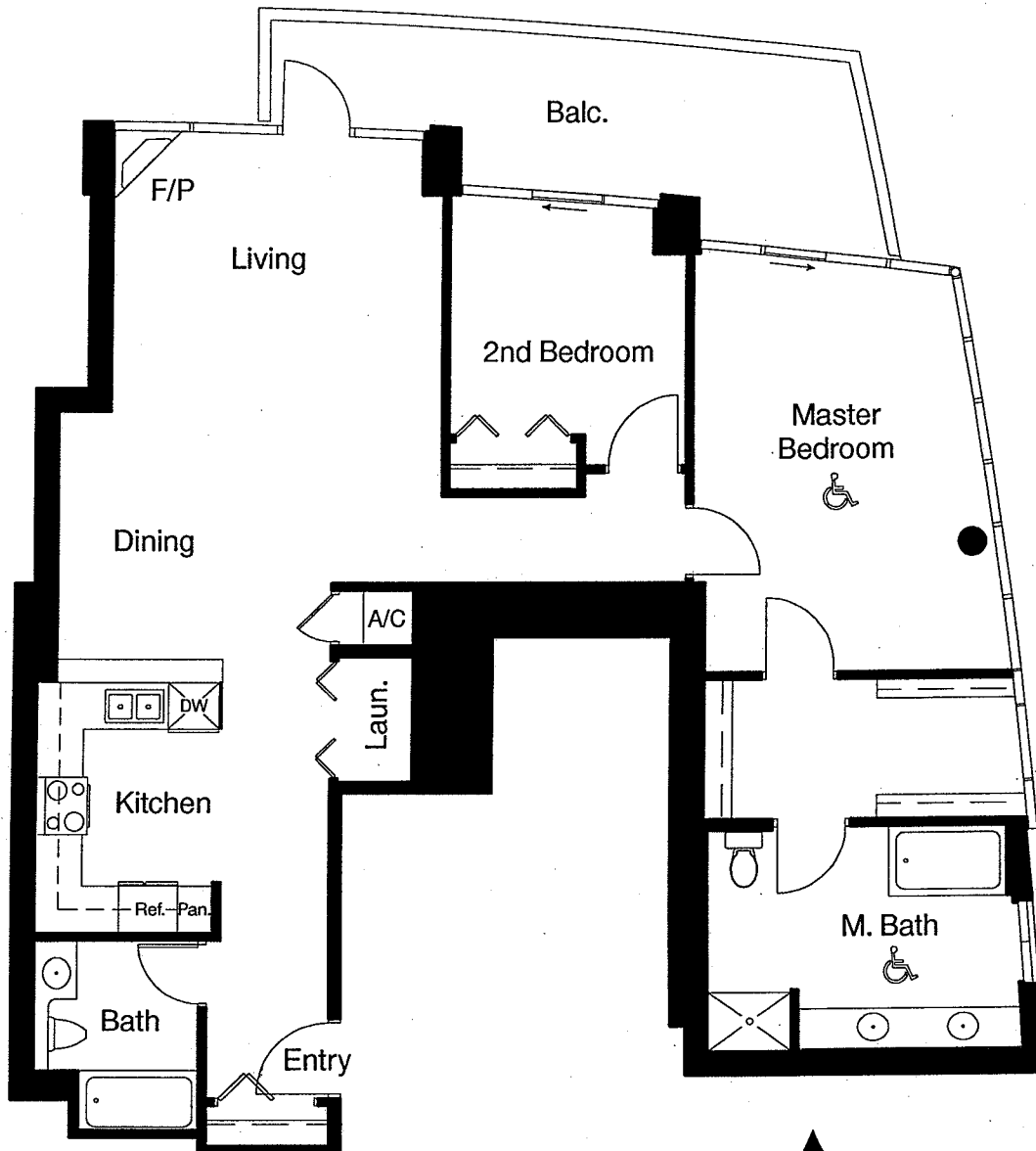


Plan E
2 Bedroom
1,301 sq.ft. (approximate)

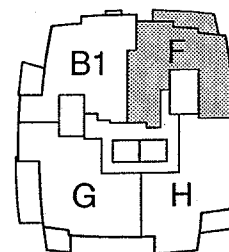
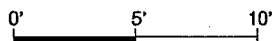


HORIZONS

MARINA DISTRICT

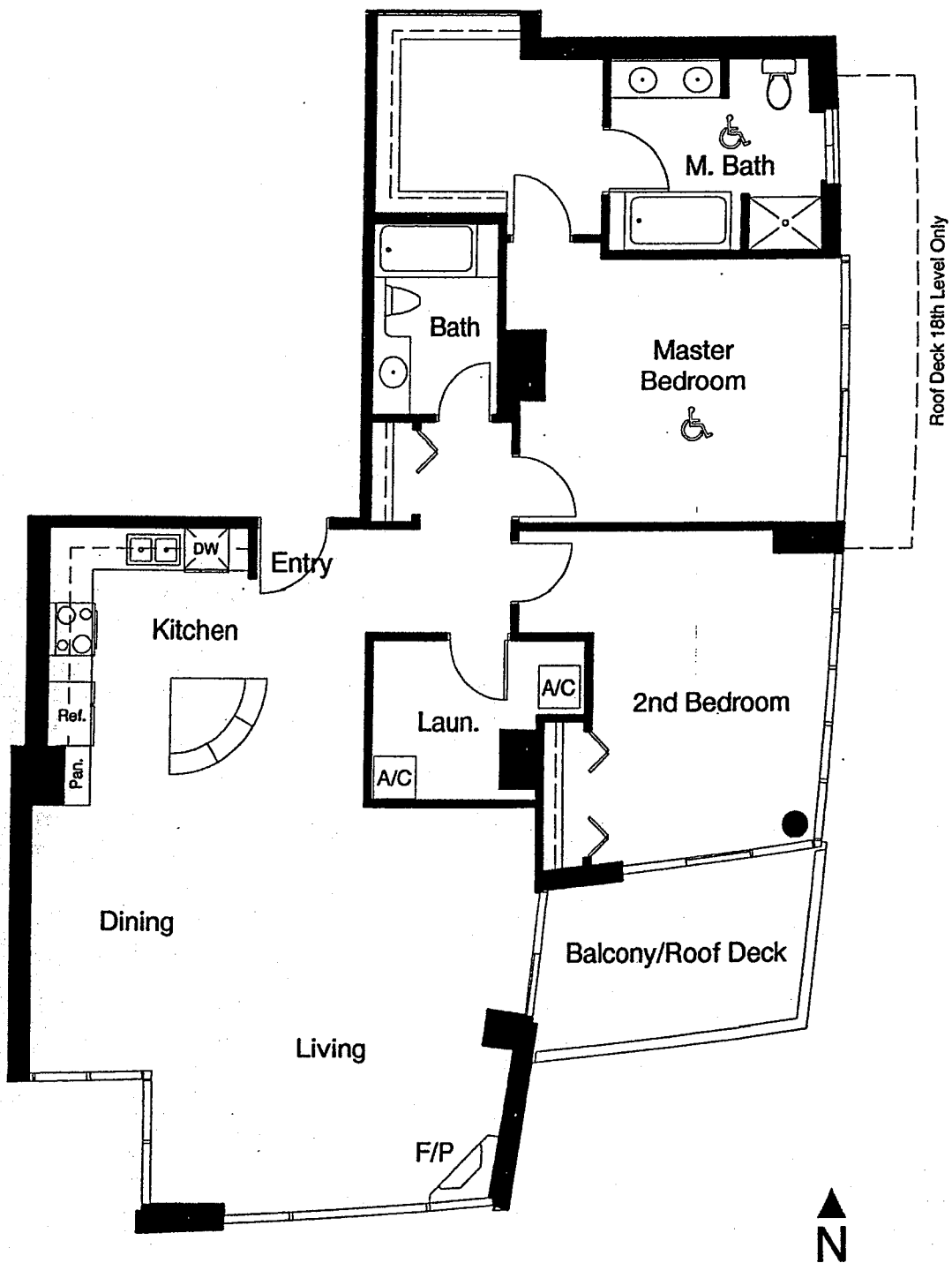


Plan F
 2 Bedroom
 1,263 sq.ft. (approximate)

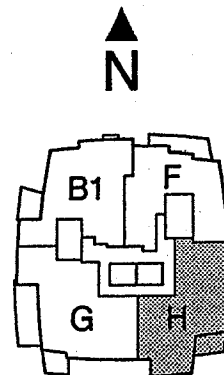


#1801 to #2301

The builder reserves the right to change floor plans, elevations, specifications and prices without notice. Square footages as noted are approximations of each individual unit. The Purchaser is responsible for verification of the unit layout & square footage. All renderings, floor plans and maps are artist's conceptions and are not intended to be an actual depiction of buildings, driveways or landscaping. Floor plans vary. Ask a Horizons sales person for details.



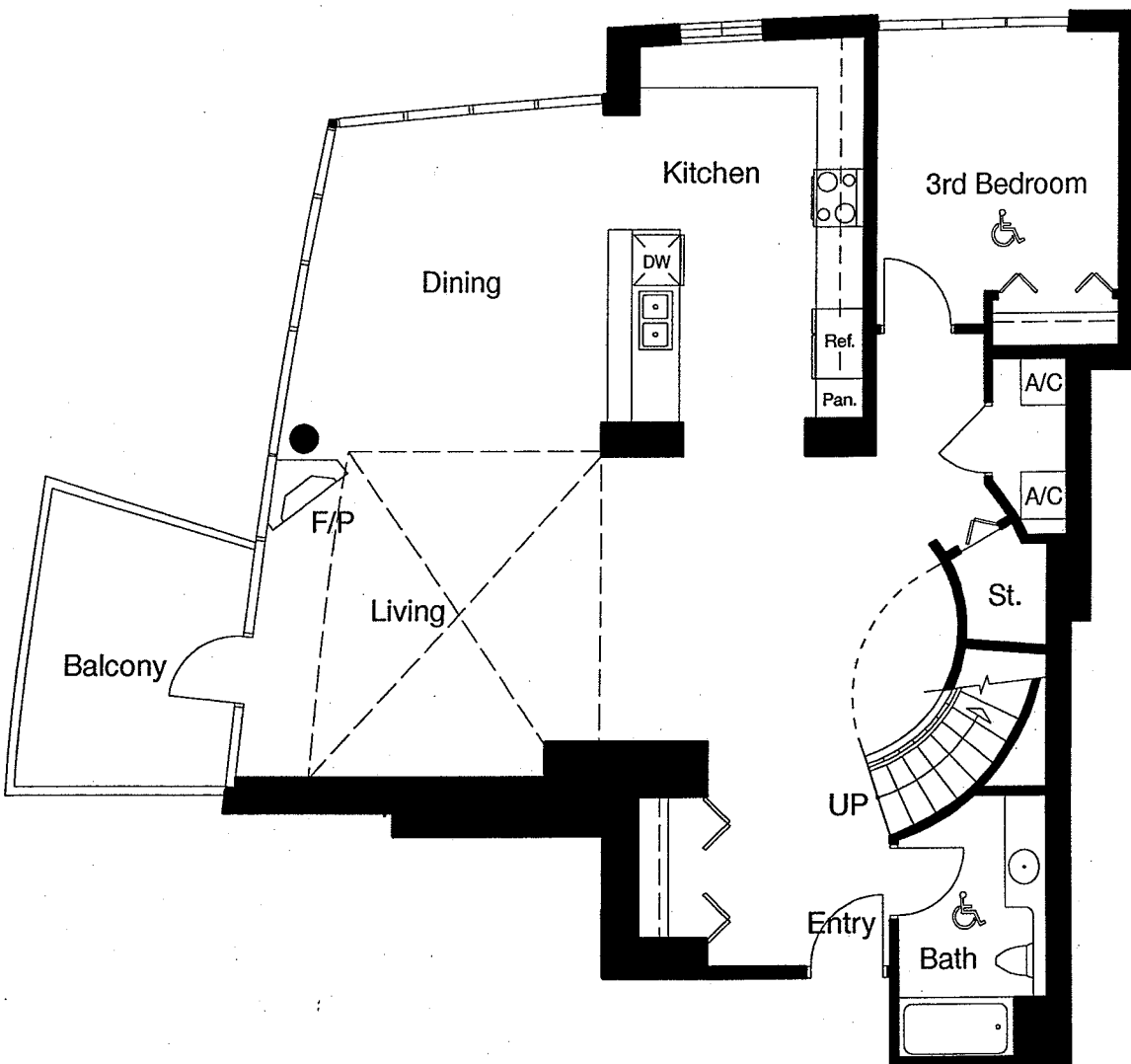
Plan H
2 Bedroom
1,497 sq.ft. (approximate)



#1802 to #1902

HORIZONS

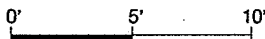
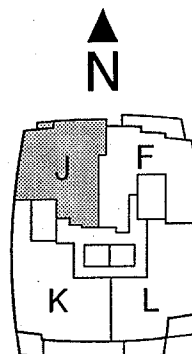
MARINA DISTRICT



Main Level

Plan J - Two Level
 3 Bedroom
 2,267 sq.ft. (approximate)

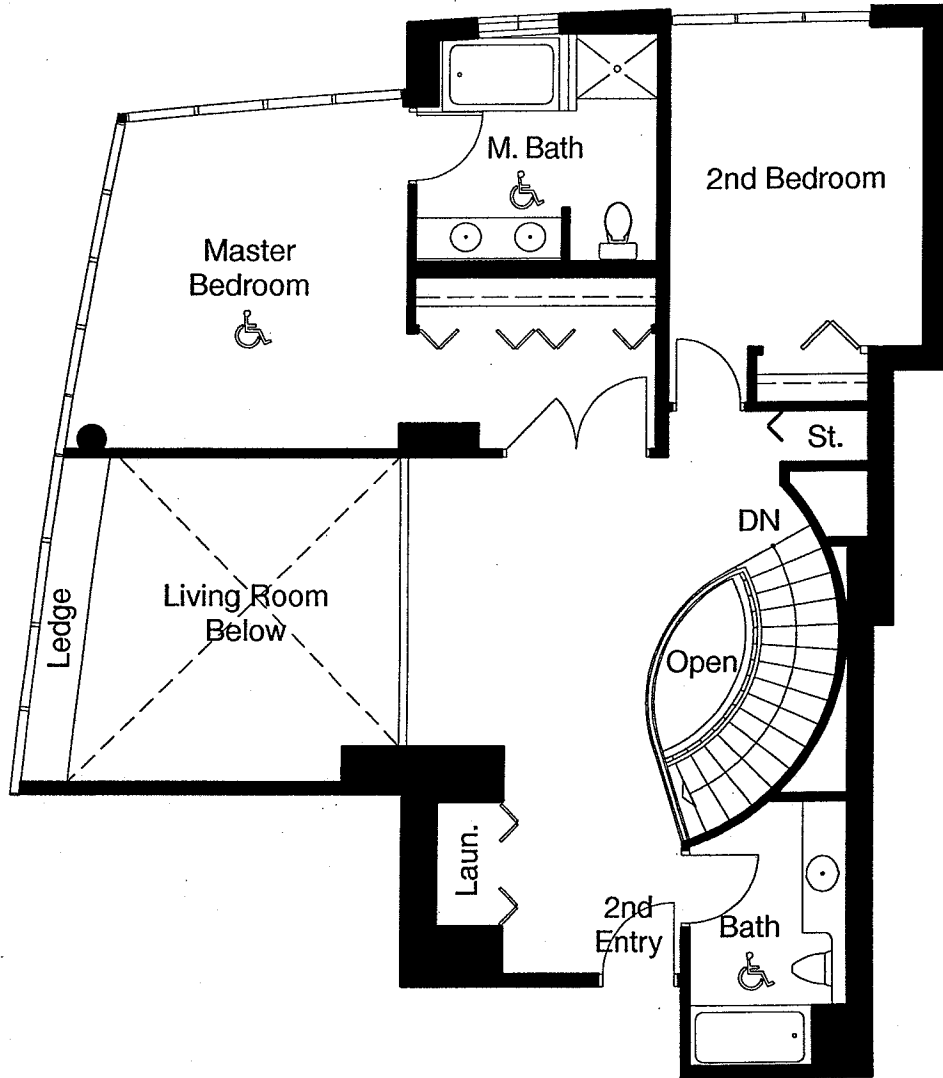
#2004 to #2204



The builder reserves the right to change floor plans, elevations, specifications and prices without notice. Square footages as noted are approximations of each individual unit. The Purchaser is responsible for verification of the unit layout & square footage. All renderings, floor plans and maps are artist's conceptions and are not intended to be an actual depiction of buildings, driveways or landscaping. Floor plans vary. Ask a Horizons sales person for details.

HORIZONS

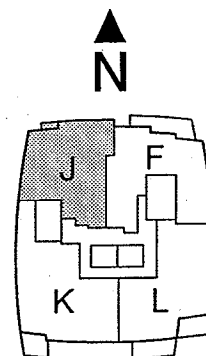
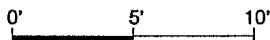
MARINA DISTRICT



Second Level

Plan J - Two Level
 3 Bedroom
 2,267 sq.ft. (approximate)

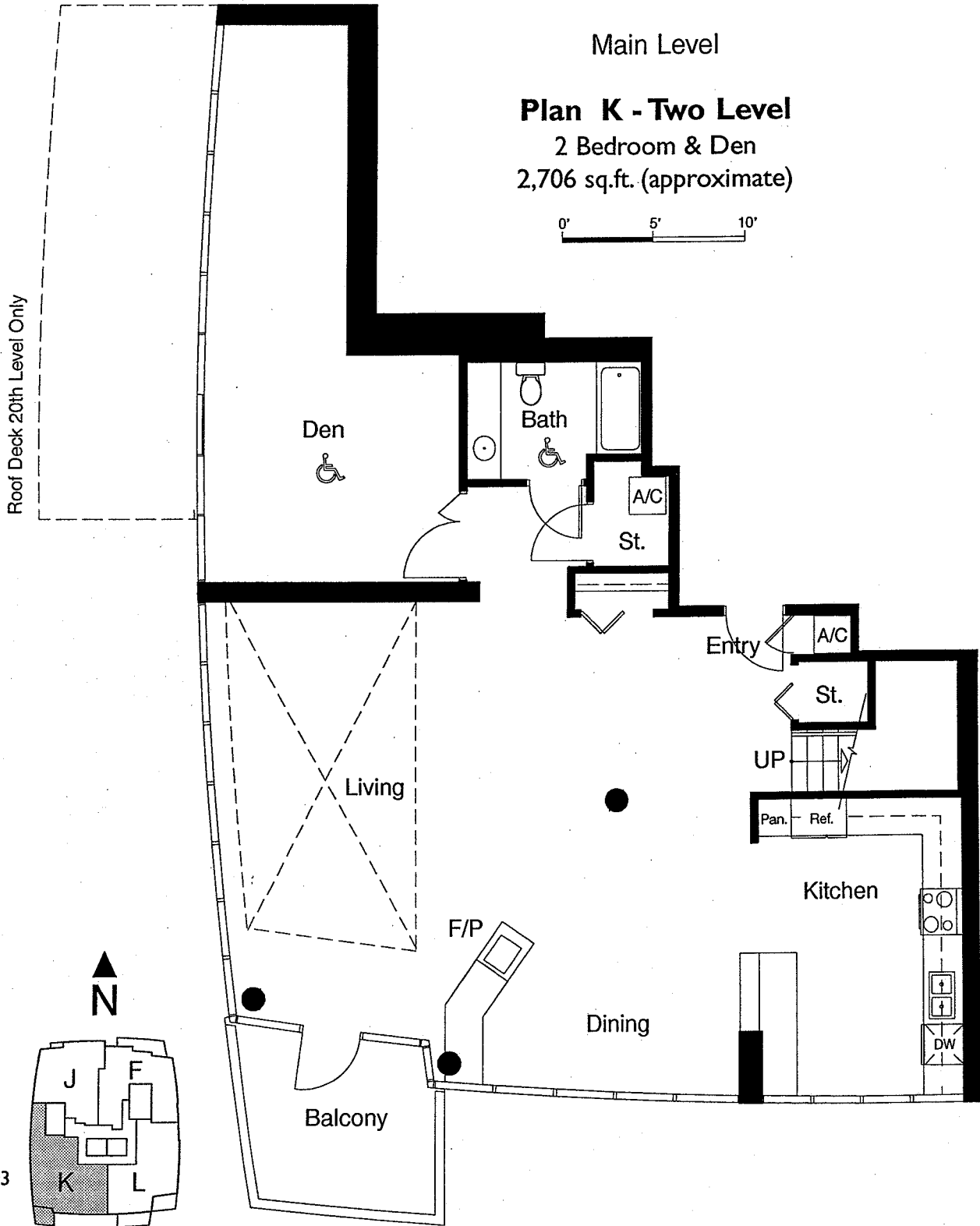
#2004 to #2204



The builder reserves the right to change floor plans, elevations, specifications and prices without notice. Square footages as noted are approximations of each individual unit. The Purchaser is responsible for verification of the unit layout & square footage. All renderings, floor plans and maps are artist's conceptions and are not intended to be an actual depiction of buildings, driveways or landscaping. Floor plans vary. Ask a Horizons sales person for details.

HORIZONS

MARINA DISTRICT

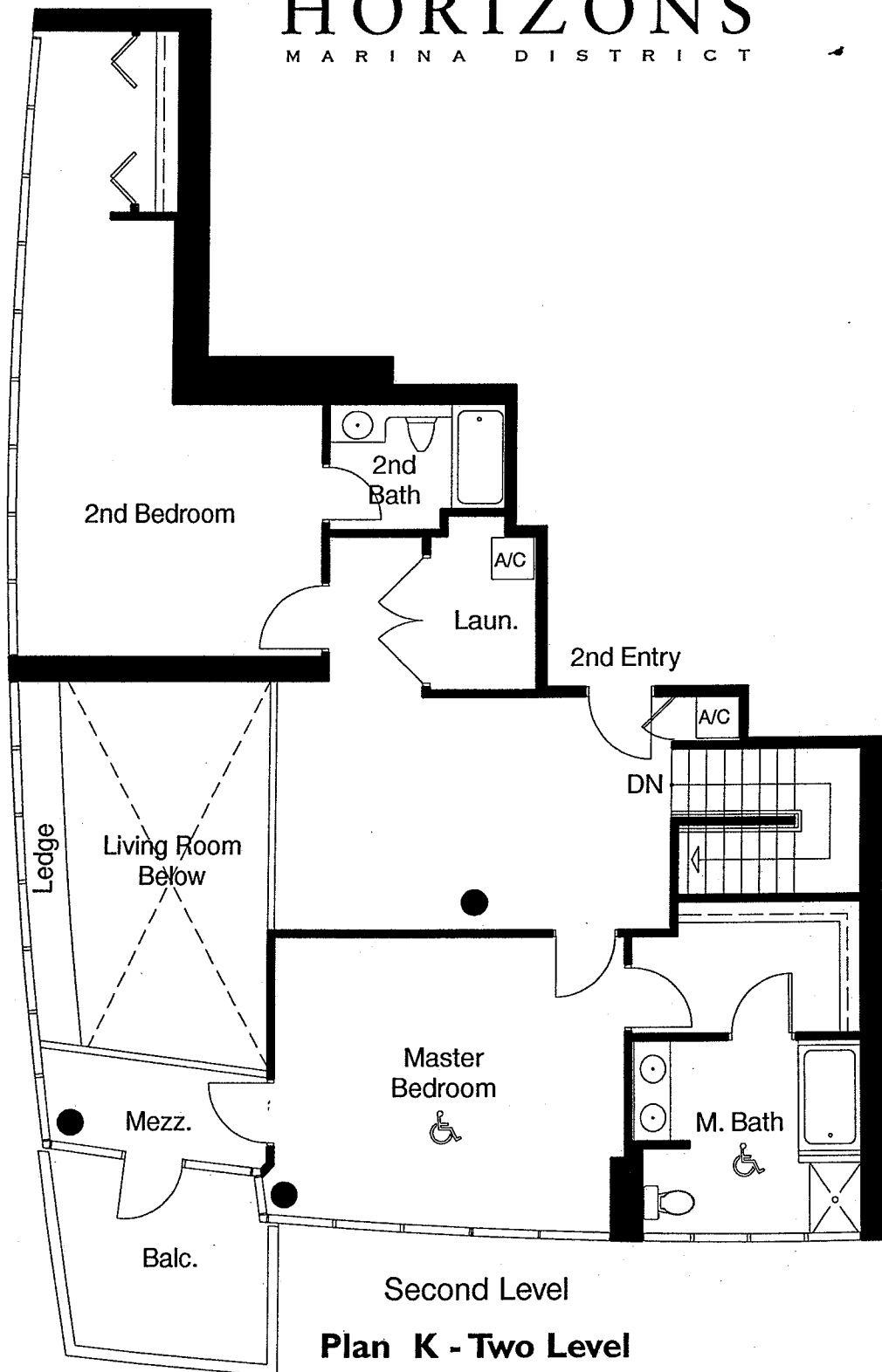


The builder reserves the right to change floor plans, elevations, specifications and prices without notice. Square footages as noted are approximations of each individual unit. The Purchaser is responsible for verification of the unit layout & square footage. All renderings, floor plans and maps are artist's conceptions and are not intended to be an actual depiction of buildings, driveways or landscaping. Floor plans vary. Ask a Horizons sales person for details.



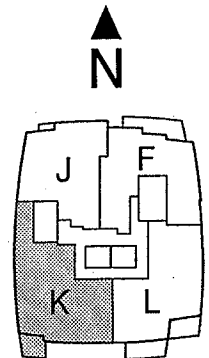
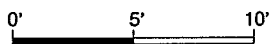
HORIZONS

MARINA DISTRICT



Second Level
Plan K - Two Level
 2 Bedroom & Den
 2,706 sq.ft. (approximate)

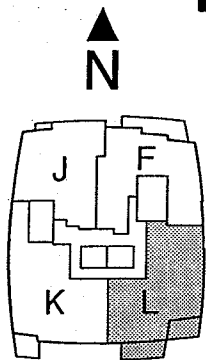
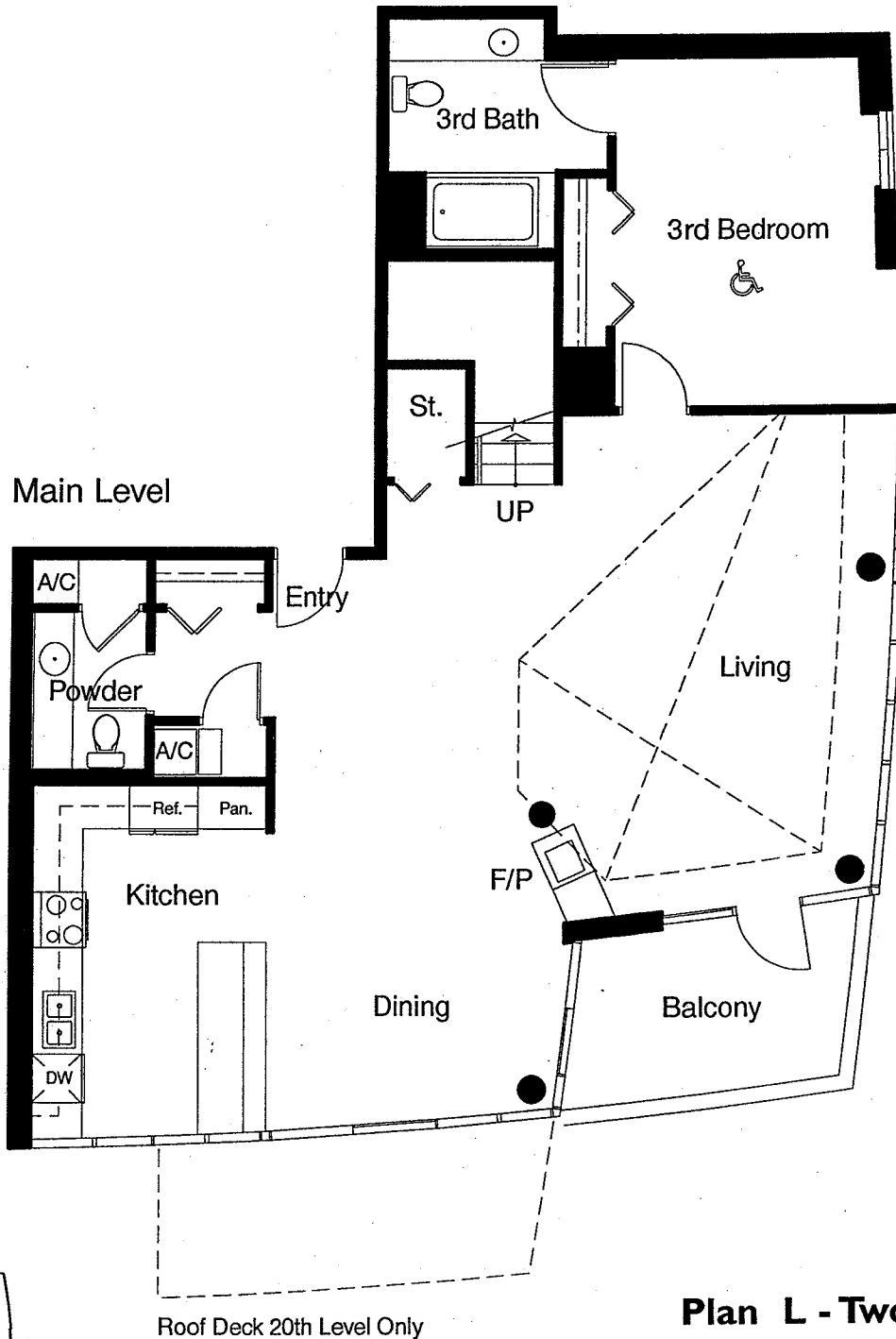
#2003 and #2203



The builder reserves the right to change floor plans, elevations, specifications and prices without notice. Square footages as noted are approximations of each individual unit. The Purchaser is responsible for verification of the unit layout & square footage. All renderings, floor plans and maps are artist's conceptions and are not intended to be an actual depiction of buildings, driveways or landscaping. Floor plans vary. Ask a Horizons sales person for details.

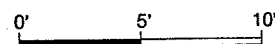
HORIZONS

MARINA DISTRICT



#2002 and #2202

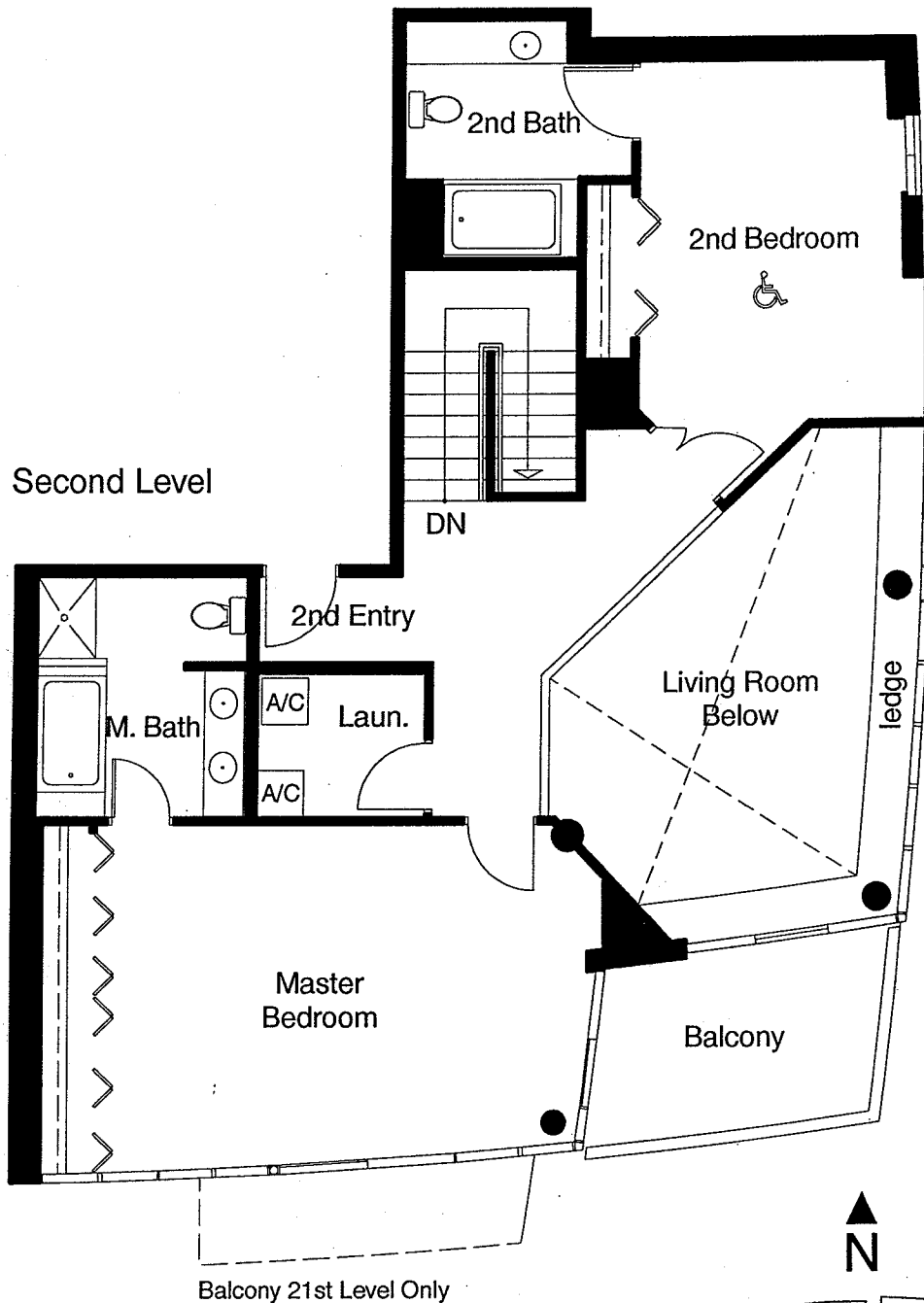
Plan L - Two Level
3 Bedroom
2,479 sq.ft. (approximate)



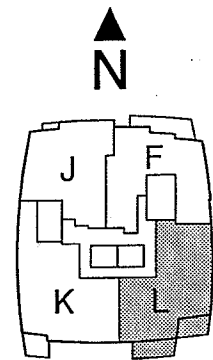
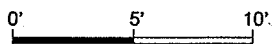
The builder reserves the right to change floor plans, elevations, specifications and prices without notice. Square footages as noted are approximations of each individual unit. The Purchaser is responsible for verification of the unit layout & square footage. All renderings, floor plans and maps are artist's conceptions and are not intended to be an actual depiction of buildings, driveways or landscaping. Floor plans vary. Ask a Horizons sales person for details.

HORIZONS

MARINA DISTRICT

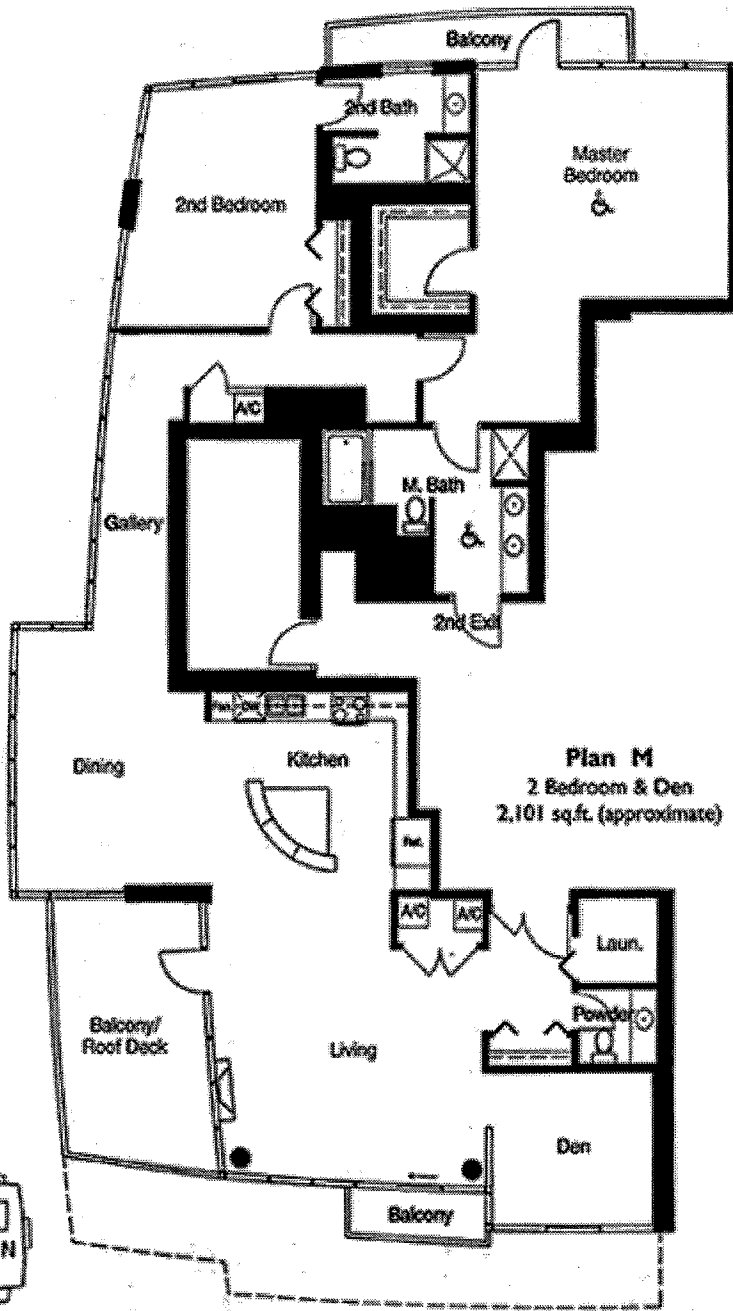


Plan L - Two Level
 3 Bedroom
 2,479 sq.ft. (approximate)



#2002 and #2202

The builder reserves the right to change floor plans, elevations, specifications and prices without notice. Square footages as noted are approximations of each individual unit. The Purchaser is responsible for verification of the unit layout & square footage. All renderings, floor plans and maps are artist's conceptions and are not intended to be an actual depiction of buildings, driveways or landscaping. Floor plans vary. Ask a Horizons sales person for details.

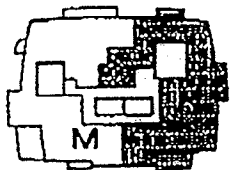
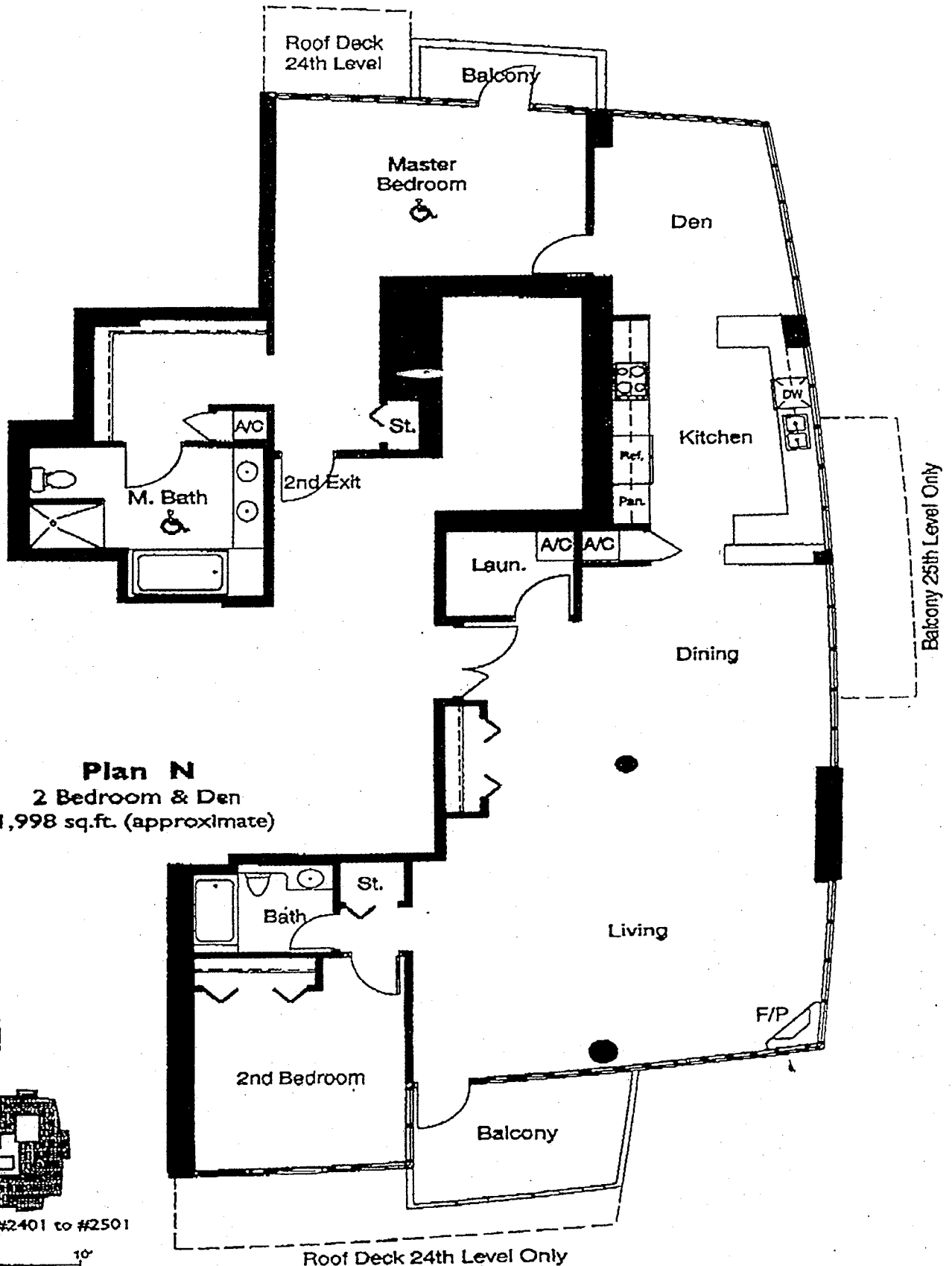


2402-2502



HORIZONS

MARINA DISTRICT



#2401 to #2501



The builder reserves the right to change floor plans, elevations, specifications and prices without notice. Square footages as noted are approximations of each individual unit. The Purchaser is responsible for verification of the unit layout & square footage. All renderings, floor plans and maps are artist's conceptions and are not intended to be used as a basis for any legal action. Floor plans vary. Ask a Horizons sales person for details.